



BURTON TAYLOR
STUDIO

Venue Visual Story

A resource to help you prepare for
your visit to the Burton Taylor Studio



Contents

What is a Visual Story?	1
Arriving at the Burton Taylor Studio	2
First Floor	3
Foyer and Bar	4
Top Floor	5
The Studio Theatre	6
What happens next	7
Leaving the Studio	8
Contact us	9

What is a Visual Story?

This visual story is designed to help anyone who wants to know more about what a visit to the Burton Taylor Studio will be like.

Who can benefit from visual stories?

A visual story can be helpful for people who have never been to our Studio before or might feel anxious about visiting. They are especially useful for people with autism or who are neurodivergent.



Further questions?

Our friendly Box Office team is here to help. Whether you have questions or would like to visit the venue in advance, we're happy to assist.

 01865 305305

 boxoffice@oxfordplayhouse.com

 www.oxfordplayhouse.com/your-visit

Arriving at the Burton Taylor Studio

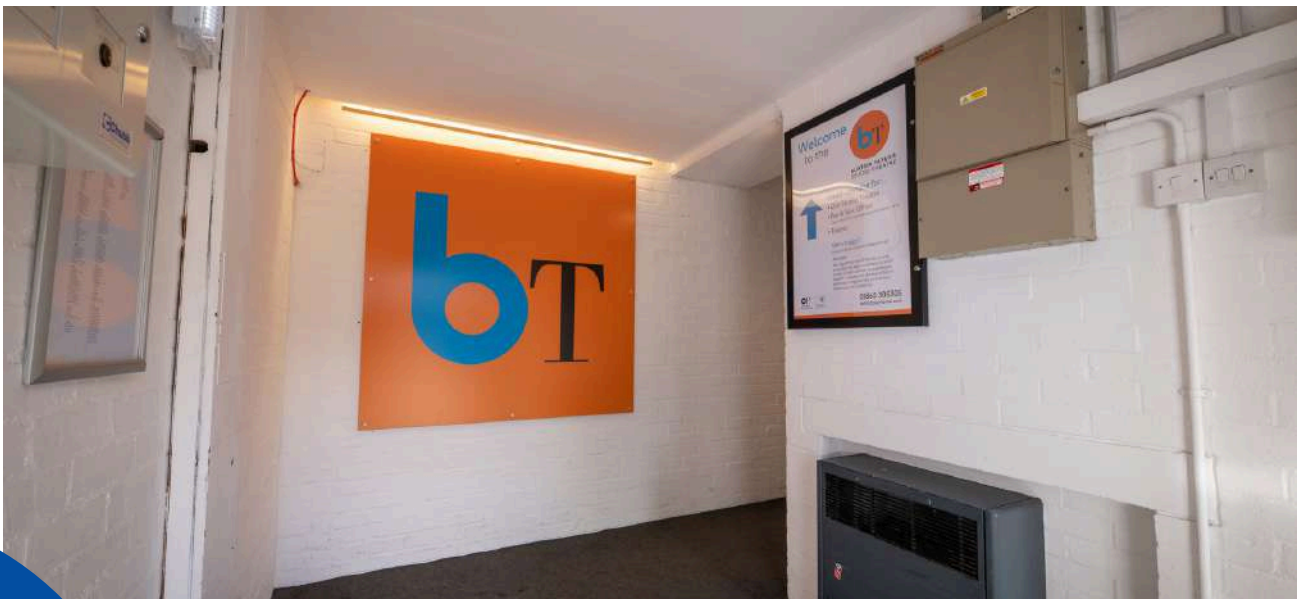
The Burton Taylor Studio is located on Gloucester Street.



The front of the Burton Taylor Studio from Gloucester Street.

We welcome audience members to arrive up to 30 minutes before the performance.

There is one step up to the main entrance of the Ground Floor, where you can leave buggies folded down.



Ground Floor of the Burton Taylor Studio.

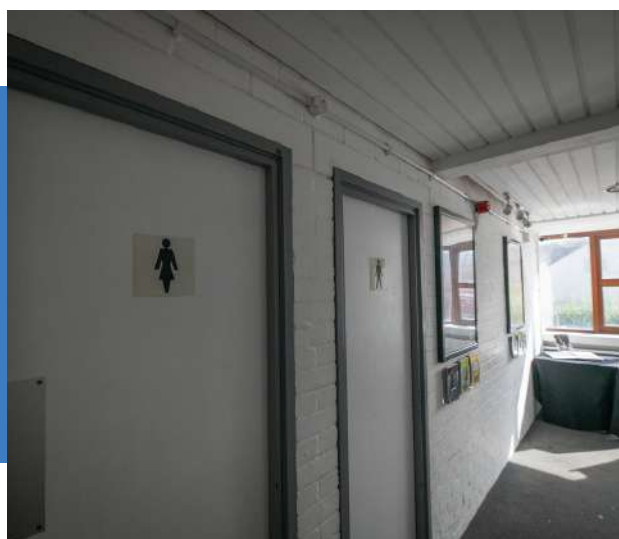
First Floor

From the Ground Floor, you will walk up one flights of stairs.



Stairs from the Ground Floor to the First Floor with posters of upcoming shows.

On the First Floor, you will find the toilets with baby changing facilities, as well as the entrance to the Foyer and Bar.



First Floor where the toilets and baby changing facilities are located.

Foyer and Bar

The Foyer and Bar are where you can purchase drinks, snacks and ice cream before the performance.



There are seats available to sit down before the performance and music might be quietly from the speaker.

For family shows, toys are available to enjoy in this space.

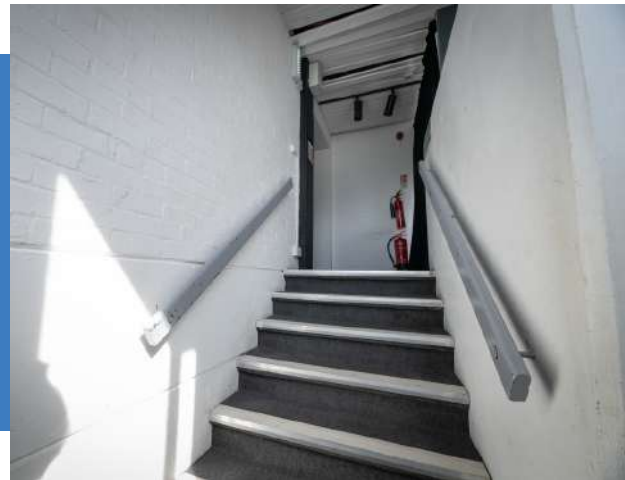
If you have any questions, you can ask a member of staff.



Top Floor

A member of staff will announce when the Studio is open for you to access and take your seats.

From the Foyer and Bar area, head back through the First Floor to the stairs going up to the Top Floor.



Stairs from the First Floor to the Top Floor.

You can enter the Studio from the black door on the left as you get the Top Floor landing.

a member of staff will scan your ticket and will direct you to the seating in the Studio.

There may be a few steps up to the seats.

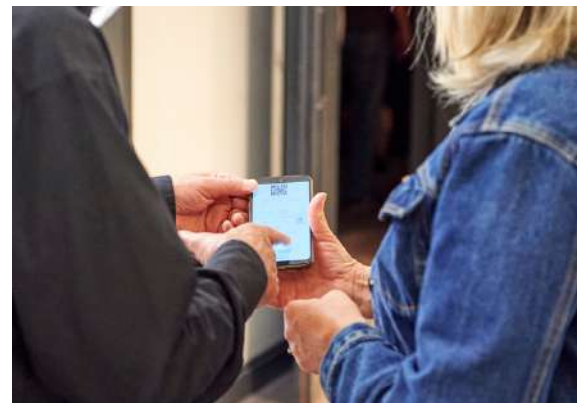


Image credit Geraint Lewis



If you see the belt across the stairs, it is not time to enter The Studio.

Head back to the Foyer and Bar until the member of staff opens the stairs for visitors to take their seats.

The Studio

The Studio space is a large black room with seats, which will be full of other people coming to see the performance.

Seating may be tiered or for family shows, cushions will be available for children to sit on.



During the performance, there may be some loud noises, music and bright lights.

There may be moments that are happy and funny, and people laugh. There may be sad bits, or even scary bits and the audience may respond to this. This is all okay.



What happens next

During some performances, the actors might ask you to join in. The audience might be very loud, shouting and laughing. You are welcome to join in or not.



Bed Time presented by Oxford Playhouse
Image credit Geraint Lewis



Where's Father Christmas? presented by Oxford Playhouse
Image credit Geraint Lewis

In the middle of the show, there is sometimes a short break called the interval that usually lasts 10-15 minutes; family shows normally don't have an interval. This gives the audience time to stretch their legs, buy drinks and snacks as well as use the toilet. The Foyer and Bar may get quite busy.

If you want to leave the auditorium during the show that's okay, the lights will be left on a bit to help you find your way out and a Duty Manager will be located by the door.

When you're ready, you can come back and sit down in your seat again.



Trust, Actually by the Playhouse Young Company
Image credit Geraint Lewis



The Bletchley Girls by the Playhouse Youth Theatre
Image credit Geraint Lewis

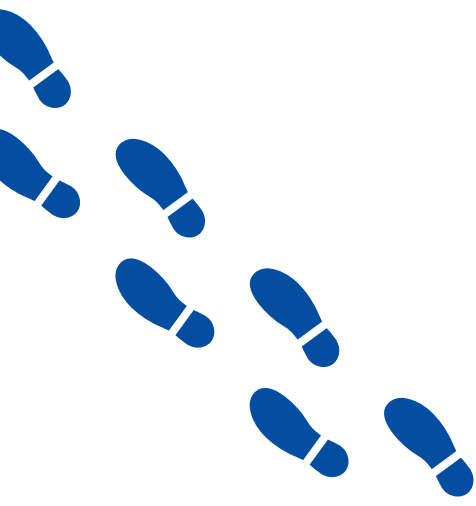
Leaving the Studio

The lights in the Studio will come back on at the end of the performance, and the audience will begin to leave.

You can gradually make your way out of The Studio, heading back downstairs. Be sure to collect all of your belongings, including buggies.



You can exit through the Ground Floor, stepping back onto Gloucester Street.





**BURTON TAYLOR
STUDIO**

Contact Us

If you have any questions, would like any advice, or further information, do let us know.

We're here to make your visit a positive one.

Phone

01865 305305

Email

boxoffice@oxfordplayhouse.com

Website

oxfordplayhouse.com

Location

Gloucester Street
Oxford
OX1 2LW



Image credit Andrew Walmsley